

PW Analytical Balances	3	WBW Washdown Scales	27
PGW Precision Balances	4-5	Warrior® Washdown Scales	28
PGL Precision Balances	6-7	PT Platforms	29
PMB Moisture Analyzer	8	PTM Platforms	30
Highland® Portable Precision Balances	9	PTS Pallet Truck Scale	31
Core® Compact Portable Balances	10	GF Platforms	32
CB Compact Balances	11	AE Washdown Indicators	33
Dune® Compact Balances	12	GC Counting Indicator	34
TBB Triple Beam Balances	13	GK Indicator	35
LBK Weighing Scales	14	SHS Crane Scales	36
CBK Bench Checkweighing Scales	15	LHS Crane Scales	37
CBC Bench Counting Scales	16	IHS Crane Scales	38
CBD Bench Counting Scales	17	MXB Baby Scale	39
GBK Bench Checkweighing Scales	18	MTB Baby and Toddler Scale	40
GFK Floor Checkweighing Scales	19	MDW Physician Scales	41
ABK Bench Weighing Scales	20	MUW Medical Scales	42
AFK Floor Weighing Scales	21	CQT Grain Scale	43
GBC Bench Counting Scales	22	Highland® Density /	
GFC Floor Counting Scales	23	Precious Metal Balances	44
CPWplus Weighing Scales	24-25	Key Accessories	45-46
WBZ Washdown Retail Scales	26		

Key:

 External Calibration	 IP 65 Wash Down	 Time	 Percentage Weighing
 Internal Calibration	 GLP / ISO Prinouts	 Date	 Multiple Weighing Units
 Battery Operated	 Weigh Below	 USB	 Backlit Display
 Internal Battery	 Security Bracket	 RS-232 Port	 Tare

To learn more about a certain product in this catalog, scan the QR code and you will be sent to that product's page on Adam Equipment's website.

Features

- Vivid, backlit LCD easily visible in any lighting conditions
- Capacity tracker built into display for easily monitoring of possible overloads
- Programmable backlight can be set to "always on", "always off" or "light only when weighing"
- Internal calibration eliminates need for external weight set
- External calibration allows for verification and adjustment with weights
- RS-232 interface for connection to computers and printers
- Printouts include date and time for data tracking within Good Laboratory Practices (GLP) guidelines
- Selectable digital filtering helps minimize effects of vibration and disturbances
- Solid metal housing resists spills and protects internal components
- Audible overload alarm warns when capacity has been exceeded
- Security password control prevents unauthorized access
- Simple operation allows quick startup and use with little or no training
- Weighing units: mg, g, oz, N, GN, ct, dwt, mm, ozt, T, ti, tl.H, tl.S, tl.T, custom unit



Applications

- Weighing
- Parts counting
- Percentage weighing
- Checkweighing
- Dynamic / animal weighing
- Density determination

Model	Capacity	Readability	Pan Size	List Price
PW 124	120g	0.0001g	3.5" ø / 90mm ø	\$1,645.00
PW 184	180g	0.0001g	3.5" ø / 90mm ø	\$1,845.00
PW 254	250g	0.0001g	3.5" ø / 90mm ø	\$2,045.00



Shipping Specs.

Weight:
31lb / 14kg
Dimensions:
15.7"x26.8"x18.9" /
400x680x480mm



Item number	Description	List Price
104008036	Anti-vibration table	\$675.00
106007452	Density kit	\$375.00
301000001	Dust cover	\$45.00
301208188	In-use wet cover	\$25.00
3074010507	RS-232 to USB adapter (must order corresponding RS-232 cable)	\$50.00
3074010266	RS-232 cable (null-modem)	\$35.00
1120011156	ATP thermal printer	\$335.00
3126011263	Thermal Paper (1 Roll) (for item no. 1120011156-ATP printer)	\$14.00
3126011281	Thermal Paper (10 Rolls) (for item no. 1120011156-ATP printer)	\$90.00
700100046	Kensington type lock and cable	\$28.00
600002028	Adam DU software	\$95.00
302126013	Below balance hanger	\$25.00
700100186	ASTM 0 - 100g calibration weight	\$180.00





Features

- Vivid, backlit LCD easily visible in any lighting conditions
- Capacity tracker built into display for easily monitoring possible overloads
- Programmable backlight can be set to “always on”, “always off” or “light only when weighing”
- Internal calibration eliminates need for external weight set
- External calibration allows for verification and adjustment with weights
- RS-232 interface for connection to computers and printers
- Printouts include date and time for data tracking within Good Laboratory Practices (GLP) guidelines
- Selectable digital filtering helps minimize effects of vibration and disturbances
- Audible overload alarm warns when capacity has been exceeded
- Security password control prevents unauthorized access
- Simple operation allows quick startup and use with little or no training
- Weighing units: mg, g, kg, lb, oz, N, GN, ct, dr, dwt, mm, ozt, T, ti, tLH, tLS, tLT, custom unit

Applications

- Weighing
- Parts counting
- Percentage weighing
- Checkweighing
- Dynamic / animal weighing
- Density determination

Model	Capacity	Readability	Pan Size	List Price
PGW 153e	150g	0.001g	5.7"x4.9" / 145x125mm	\$875.00
PGW 253e	250g	0.001g	5.7"x4.9" / 145x125mm	\$975.00
PGW 453e	450g	0.001g	5.7"x4.9" / 145x125mm	\$1,075.00
PGW 603e	600g	0.001g	5.7"x4.9" / 145x125mm	\$1,275.00
PGW 753e	750g	0.001g	5.5"x5.5" / 140x140mm	\$1,475.00
PGW 1502e	1500g	0.01g	7.6"x7.6" / 192x192mm	\$875.00
PGW 2502e	2500g	0.01g	7.6"x7.6" / 192x192mm	\$975.00
PGW 3502e	3500g	0.01g	7.6"x7.6" / 192x192mm	\$1,075.00
PGW 4502e	4500g	0.01g	7.6"x7.6" / 192x192mm	\$1,175.00
PGW 6002e	6000g	0.01g	7.6"x7.6" / 192x192mm	\$1,575.00
PGW 153i	150g	0.001g	5.7"x4.9" / 145x125mm	\$1,125.00
PGW 253i	250g	0.001g	5.7"x4.9" / 145x125mm	\$1,225.00
PGW 453i	450g	0.001g	5.7"x4.9" / 145x125mm	\$1,325.00
PGW 603i	600g	0.001g	5.7"x4.9" / 145x125mm	\$1,525.00
PGW 753i	750g	0.001g	5.5"x5.5" / 140x140mm	\$1,725.00
PGW 1502i	1500g	0.01g	7.6"x7.6" / 192x192mm	\$1,125.00
PGW 2502i	2500g	0.01g	7.6"x7.6" / 192x192mm	\$1,225.00
PGW 3502i	3500g	0.01g	7.6"x7.6" / 192x192mm	\$1,325.00
PGW 4502i	4500g	0.01g	7.6"x7.6" / 192x192mm	\$1,425.00
PGW 6002i	6000g	0.01g	7.6"x7.6" / 192x192mm	\$1,825.00

Item number	Description	List Price
104008036	Anti-vibration table	\$675.00
106007453	Density kit for 0.001g models only	\$375.00
301007078	Dust cover	\$45.00
301207077	In-use wet cover	\$25.00
3014011014	RS-232 cable	\$35.00
3074010507	RS-232 to USB adapter (must order corresponding RS-232 cable)	\$50.00
3074010266	RS-232 cable (null-modem)	\$35.00
1120011156	ATP thermal printer	\$335.00
3126011263	Thermal Paper (1 Roll) (for item no. 1120011156-ATP printer)	\$14.00
3126011281	Thermal Paper (10 Rolls) (for item no. 1120011156-ATP printer)	\$90.00
700100046	Kensington type lock and cable	\$28.00
600002028	Adam DU software	\$95.00
302126013	Below balance hanger	\$25.00
700100191	ASTM 1 - 2000g calibration weight	\$315.00
700100187	ASTM 2 - 100g calibration weight	\$65.00
700100188	ASTM 1 - 200g calibration weight	\$95.00
700100189	ASTM 1 - 500g calibration weight	\$125.00

Shipping Specs.

Weight:
15lb / 7kg
Dimensions:
12.2"x16.1"x8.7" /
310x410x220mm



Models with “i” have internal calibration
Models with “e” require external calibration



Features

- Vivid, backlit LCD easily visible in any lighting conditions
- Capacity tracker built into display for easily monitoring of possible overloads
- Programmable backlight can be set to “always on”, “always off” or “light only when weighing”
- Removable draft shield on models with 0.001g readability helps to reduce errors caused by air currents
- Robust metal housing protects internal components in harsh environments
- Large, type 304 stainless steel pan allows swift cleaning
- RS-232 interface for connection to computers and printers
- Printouts include date and time for data tracking within Good Laboratory Practices (GLP) guidelines
- External calibration allows for verification and adjustment with weights
- Audible overload alarm warns when capacity has been exceeded
- Optional hook enables below-balance weighing
- Selectable digital filtering helps minimize effects of vibration and disturbances
- Rechargeable battery included for operation virtually anywhere
- Programmable auto power-off to save energy
- AC adapter included
- Weighing units: mg, g, kg, lb, lb:oz, oz, N, GN, ct, dwt, ozt,

Applications

- Weighing
- Parts counting
- Percentage weighing
- Checkweighing
- Density determination

Model	Capacity	Readability	Pan Size	List Price
PGL 203	200g	0.001g	5.7"x4.9" / 145x125mm	\$725.00
PGL 303	300g	0.001g	5.7"x4.9" / 145x125mm	\$825.00
PGL 2002	2000g	0.01g	7.6"x7.6" / 192x192mm	\$725.00
PGL 3002	3000g	0.01g	7.6"x7.6" / 192x192mm	\$825.00
PGL 4001	4000g	0.1g	7.6"x7.6" / 192x192mm	\$675.00
PGL 6001	6000g	0.1g	7.6"x7.6" / 192x192mm	\$725.00
PGL 8001	8000g	0.1g	7.6"x7.6" / 192x192mm	\$795.00
PGL 12001	12000g	0.1g	7.6"x7.6" / 192x192mm	\$1,295.00
PGL 15001	15000g	0.1g	7.6"x7.6" / 192x192mm	\$1,595.00
PGL 10001	10000g	0.1g	15.7"x11.8" / 400x300mm	\$1,875.00
PGL 20001	20000g	0.1g	15.7"x11.8" / 400x300mm	\$2,295.00
PGL 30001	30000g	0.1g	15.7"x11.8" / 400x300mm	\$2,995.00



Item number	Description	List Price
104008036	Anti-vibration table	\$675.00
106007453	Density kit for 0.001g models only	\$375.00
301007078	Dust cover	\$45.00
301207077	In-use wet cover	\$25.00
3074010507	RS-232 to USB adapter	\$50.00
	(must order corresponding RS-232 cable)	
3074010266	RS-232 cable (null-modem)	\$35.00
1120011156	ATP thermal printer	\$335.00
3126011263	Thermal Paper (1 Roll)	\$14.00
	(for item no. 1120011156-ATP printer)	
3126011281	Thermal Paper (10 Rolls)	\$90.00
	(for item no. 1120011156-ATP printer)	
700100046	Kensington type lock and cable	\$28.00
600002028	Adam DU software	\$95.00
302126013	Below balance hanger	\$25.00
700100191	ASTM 1 - 2000g calibration weight	\$315.00
700100193	ASTM 3 - 5000g calibration weight	\$325.00
700100190	ASTM 2 - 1000g calibration weight	\$125.00
700100187	ASTM 2 - 100g calibration weight	\$65.00
700100192	ASTM 4 - 2000g calibration weight	\$125.00
700100188	ASTM 1 - 200g calibration weight	\$95.00



Shipping Specs.

PGL 203 and PGL 303:
Weight: 11lb / 5kg
Dimensions: 12.2"x24"x6.7" / 310x610x170mm

PGL 10001, PGL 20001 and PGL 30001:
Weight: 22lb / 10kg
Dimensions: 18.1"x20.1"x7.1" / 460x510x180mm

All other PGL's:
Weight: 13lb / 6kg
Dimensions: 12.2"x16.1"x7.1" / 310x410x180mm



Features

- Vivid, backlit LCD easily visible in any lighting conditions
- Programmable backlight can be set to “always on”, “always off” or “light only when weighing”
- Pan lifter allows easy sample placement and removal
- USB and RS-232 interfaces provide easy communication with computers and printers
- USB host for memory card and USB I/O interface
- Temperature range 50°C to 160°C in one-degree increments
- Three settings for heating sample include ramp-up, stepped temperatures and single temperature
- Seven preset drying modes allow test routines for several products
- Allows automatic test start upon lid closure
- Color-coded keys facilitate quick recognition of the most frequently used buttons
- Weighing units: g, %M, %S, ATRO %M, ATRO %S

Applications

- Weighing
- Moisture determination

Model	Capacity	Readability	Pan Size	List Price
PMB 53	50g	0.001g / 0.01%	3.9" ø / 100mm ø	\$2,295.00
PMB 202	200g	0.01g / 0.05%	3.9" ø / 100mm ø	\$1,895.00



Features

- Vivid, backlit LCD easily visible in any lighting conditions
- Capacity tracker built into display for easily monitoring of possible overloads
- Balances stack efficiently and safely to save space
- USB and RS-232 interfaces provide easy communication with computers and printers
- Audible overload alarm warns when capacity has been exceeded
- Internal calibration eliminates need for external weight set
- Three-point ShockProtect® feature helps prevent overload damage to internal components
- Dual tare keys facilitate left- or right-handed operation
- Security slot for optional Kensington-type lock and cable to help prevent theft
- Hook included for weighing below the balance
- Rechargeable battery included for operation virtually anywhere
- AC adapter included
- Weighing units: g, lb, oz, N, GN, ct, dr, dwt, mm, ozt, T, tl.H, tl.S, tl.T



Applications

- Weighing
- Parts counting
- Percentage weighing
- Accumulation

Model	Capacity	Readability	Pan Size	List Price
HCB 123	120g	0.001g	4.7" ø / 120mm ø	\$425.00
HCB 153	150g	0.005g	4.7" ø / 120mm ø	\$345.00
HCB 302	300g	0.01g	4.7" ø / 120mm ø	\$335.00
HCB 602	600g	0.02g	4.7" ø / 120mm ø	\$345.00
HCB 602H	600g	0.01g	4.7" ø / 120mm ø	\$415.00
HCB 1002	1000g	0.01g	4.7" ø / 120mm ø	\$485.00
HCB 1502	1500g	0.05g	4.7" ø / 120mm ø	\$345.00
HCB 3001	3000g	0.1g	4.7" ø / 120mm ø	\$345.00



Item number	Description	List Price
104008036	Anti-vibration table	\$675.00
1070010636	Temperature calibration kit	\$250.00
301208188	In-use wet cover	\$25.00
3074010267	USB cable	\$35.00
3074010266	RS-232 cable (null-modem)	\$35.00
1120011156	ATP thermal printer	\$335.00
3126011263	Thermal Paper (1 Roll) (for item no. 1120011156-ATP printer)	\$14.00
3126011281	Thermal Paper (10 Rolls) (for item no. 1120011156-ATP printer)	\$90.00
307140001	Sample pans/disposable (pack of 250)	\$175.00
700100046	Kensington type lock and cable	\$28.00
600002028	Adam DU software	\$95.00
700100195	ASTM 3 - 200g calibration weights	\$65.00
700100194	ASTM 3 - 50g calibration weights	\$50.00

Shipping Specs.

Weight:
18lb / 8kg
Dimensions:
15"x18.9"x11.8" /
380x480x300mm



Table of Contents

Shipping Specs.

Weight:
7lb / 3kg
Dimensions:
14"x11.2"x5.5" /
355x285x140mm



Table of Contents

Item number	Description	List Price
308002042	Hard carrying case w/ lock	\$75.00
308232034	In-use wet cover (pack of 5)	\$85.00
308232035	In-use wet cover (pack of 10)	\$150.00
308232030	In-use wet cover	\$20.00
3074010267	USB cable	\$35.00
3074010266	RS-232 cable (null-modem)	\$35.00
1120011156	ATP thermal printer	\$335.00
3126011263	Thermal Paper (1 Roll) (for item no. 1120011156-ATP printer)	\$14.00
3126011281	Thermal Paper (10 Rolls) (for item no. 1120011156-ATP printer)	\$90.00
700100046	Kensington type lock and cable	\$28.00
600002028	Adam DU software	\$95.00
700100195	ASTM 3 - 200g calibration weight	\$65.00
700100190	ASTM 2 - 1000g calibration weight	\$125.00
700100187	ASTM 2 - 100g calibration weight	\$65.00
700100192	ASTM 4 - 2000g calibration weight	\$125.00





Features

- Rugged construction stands up to industrial use
- Three-point ShockProtect® feature helps prevent overload damage to internal components
- Large, type 304 stainless steel pan allows swift cleaning
- Audible overload alarm warns when capacity has been exceeded
- Vivid, backlit LCD easily visible in any lighting conditions
- Programmable backlight can be set to “always on”, “always off” or “light only when weighing”
- Operates with AC adapter (included) or batteries (not included)
- Auto power-off to save energy
- Removable draft shield (120mm pan size only)
- Balances stack efficiently and safely to save space (120mm pan size only)
- Color-coded keys facilitate quick recognition of the most frequently used buttons
- Weighing units: g, kg, lb, oz, N, GN, ct, dr, tl.T

Applications

- Weighing

Model	Capacity	Readability	Pan Size	List Price
CQT 202	200g	0.01g	4.7" ø / 120mm ø	\$240.00
CQT 251	250g	0.1g	4.7" ø / 120mm ø	\$110.00
CQT 601	600g	0.1g	4.7" ø / 120mm ø	\$155.00
CQT 1501	1500g	0.1g	4.7" ø / 120mm ø	\$225.00
CQT 2000	2000g	1g	5.7" ø / 145mm ø	\$110.00
CQT 2601	2600g	0.1g	5.7" ø / 145mm ø	\$280.00
CQT 5000	5000g	1g	5.7" ø / 145mm ø	\$155.00



Item number	Description	List Price
308002042	Hard carrying case w/ lock	\$75.00
308232033	In-use wet cover	\$20.00
308232036	In-use wet cover (pack of 5)	\$85.00
308232037	In-use wet cover (pack of 10)	\$150.00
700100046	Kensington type lock and cable	\$28.00
700100195	ASTM 3 - 200g calibration weight	\$65.00
700100190	ASTM 2 - 1000g calibration weight	\$125.00
700100187	ASTM 2 - 100g calibration weight	\$65.00
700100192	ASTM 4 - 2000g calibration weight	\$125.00

Shipping Specs.

Weight:
4lb / 2kg
Dimensions:
14"x11.2"x5.5" /
355x285x140mm



Table of Contents

Features

- High-contrast display is easily visible from a distance
- Large, type 304 stainless steel pan allows swift cleaning
- Overload protection helps prevent damage to internal components
- Sealed keypad protects against dirt and accidental spills
- Low-battery indicator alerts users when batteries need replacement
- Auto power-off to save energy
- Lightweight design simplifies transport and portability
- Vivid, backlit LCD easily visible in any lighting conditions
- Color-coded keys facilitate quick recognition of the most frequently used buttons
- Solid ABS housing is durable for industrial uses
- Optional 6VDC 200mA adapter
- Weighing units: g, lb, oz

Applications

- Weighing



Model	Capacity	Readability	Pan Size	List Price
CB 501	500g	0.1g	5.1" ø / 130mm ø	\$89.00
CB 1001	1000g	0.1g	5.1" ø / 130mm ø	\$99.00
CB 3000	3000g	1g	5.1" ø / 130mm ø	\$89.00



Item number	Description	List Price
700400120	6VDC 200mA Adapter	\$30.00

Shipping Specs.

Weight:
2lb / 1kg
Dimensions:
6.9"x8.3"x2.4" /
175x210x60mm



Table of Contents





Features

- Color-coded keys facilitate quick recognition of the most frequently used buttons
- Solid ABS housing is durable for industrial uses
- Operates with AC adapter (included) or batteries (not included)
- Low-battery indicator alerts users when batteries need replacement
- Auto power-off to save energy
- High-contrast display is easily visible from a distance
- Lightweight design simplifies transport and portability
- Overload protection helps prevent damage to internal components
- Sealed keypad protects against dirt and accidental spills
- Weighing units: g, lb*, oz

Applications

- Weighing

Model	Capacity	Readability	Pan Size	List Price
DCT 201	200g	0.1g	5.7"x5.7" / 145x145mm	\$69.00
DCT 2000	2000g	1g	5.7"x5.7" / 145x145mm	\$69.00
DCT 5000	5000g	2g	5.7"x5.7" / 145x145mm	\$69.00



Shipping Specs.

Weight:
2lb / 1kg
Dimensions:
6.3"x12.2"x2" /
160x310x50mm



Table of Contents

Features

- Security slot for optional Kensington-type lock and cable to help prevent theft
- Magnetic damping slows pointer movement for faster readings
- Notched, tiered, graduated beams ensure positive positioning and accurate reading of results
- Integrated rulers in centimeters and inches lets users measure length
- Storage space included for stowing weights when not in use
- Optional hook enables below-balance weighing (Hook included with 2610S and 2610T models)
- Large, type 304 stainless steel pan allows swift cleaning
- Weighing units: g

Applications

- Weighing



Model	Capacity	Readability	Pan Size	List Price
TBB 610S	610g	0.1g	6" ø / 152mm ø	\$99.00
TBB 2610S	2610g	0.1g	6" ø / 152mm ø	\$131.00
TBB 2610T	2610g	0.1g	6" ø / 152mm ø	\$142.00



Item number	Description	List Price
700100211	Hard carrying case w/ lock	\$65.00
700100046	Kensington type lock and cable	\$28.00
700100213	Tripod legs	\$18.00
700100225	Weight set	\$28.00

Shipping Specs.

Weight:
9lb / 4kg
Dimensions:
6.3"x21.7"x9.1" /
160x550x230mm



Table of Contents



* lb not included on DCT201





Features

- Vivid, backlit LCD easily visible in any lighting conditions
- Color-coded keys facilitate quick recognition of the most frequently used buttons
- Large, type 304 stainless steel pan allows swift cleaning
- Level indicator and adjusting feet ensure proper balance setup for optimum weighing results
- Splash-proof housing, keypad and display mean easy cleaning and peace of mind
- Lightweight design simplifies transport and portability
- Audible overload alarm warns when capacity has been exceeded
- Parts counting with preset sample sizes
- Rechargeable battery included for operation virtually anywhere
- Programmable auto power-off to save energy
- AC adapter included
- Weighing units: g, kg, lb, lb:oz, oz

Applications

- Weighing
- Parts counting
- Percentage weighing

Model	Capacity	Readability	Pan Size	List Price
LBK 6a	6lb / 3kg	0.001lb / 0.5g	9.8"x7.1" / 250x180mm	\$175.00
LBK 12a	12lb / 6kg	0.002lb / 1g	9.8"x7.1" / 250x180mm	\$175.00
LBK 25a	25lb / 12kg	0.005lb / 2g	9.8"x7.1" / 250x180mm	\$175.00
LBK 65a	65lb / 30kg	0.01lb / 5g	9.8"x7.1" / 250x180mm	\$175.00



Item number	Description	List Price
700200056	In-use wet cover	\$20.00
700200063	In-use wet cover (pack of 5)	\$85.00
700200064	In-use wet cover (pack of 10)	\$150.00

Shipping Specs.

Weight:
9lb / 4kg
Dimensions:
11.6"x13.8"x6.9" /
295x350x175mm



Features

- Vivid, backlit LCD easily visible in any lighting conditions
- Capacity tracker built into display for easily monitoring of possible overloads
- Color-coded keys facilitate quick recognition of the most frequently used buttons
- Sealed keypad protects against dirt and accidental spills
- Quick and easy configuration using the keypad
- Checkweighing LEDs light to clearly show under, over and acceptable limits
- Checkweighing with audible alarm
- Parts counting with freely selectable sample sizes
- Internal counting resolution 1:400,000 for precision results
- Memory accumulation totals results
- Rugged construction stands up to industrial use
- RS-232 interface for connection to computers and printers
- Optional USB interface simplifies data communication
- Audible overload alarm warns when capacity has been exceeded
- Large, type 304 stainless steel pan allows swift cleaning
- Rechargeable battery included for operation virtually anywhere
- AC adapter included
- Weighing units: g, kg, lb, lb:oz, oz

Applications

- Weighing
- Parts counting
- Percentage weighing
- Checkweighing
- Accumulation



Model	Capacity	Readability	Pan Size	List Price
CBK 8a	8lb / 4kg	0.0002lb / 0.1g	8.9"x10.8" / 225x275mm	\$395.00
CBK 16a	16lb / 8kg	0.0005lb / 0.2g	8.9"x10.8" / 225x275mm	\$395.00
CBK 16aH	16lb / 8kg	0.0002lb / 0.1g	8.9"x10.8" / 225x275mm	\$495.00
CBK 35a	35lb / 16kg	0.001lb / 0.5g	8.9"x10.8" / 225x275mm	\$395.00
CBK 70a	70lb / 32kg	0.002lb / 1g	8.9"x10.8" / 225x275mm	\$395.00
CBK 100a	100lb / 48kg	0.005lb / 2g	8.9"x10.8" / 225x275mm	\$395.00
CBK 8a w/USB	8lb / 4kg	0.0002lb / 0.1g	8.9"x10.8" / 225x275mm	\$470.00
CBK 16a w/USB	16lb / 8kg	0.0005lb / 0.2g	8.9"x10.8" / 225x275mm	\$470.00
CBK 16aH w/USB	16lb / 8kg	0.0002lb / 0.1g	8.9"x10.8" / 225x275mm	\$570.00
CBK 35a w/USB	35lb / 16kg	0.001lb / 0.5g	8.9"x10.8" / 225x275mm	\$470.00
CBK 70a w/USB	70lb / 32kg	0.002lb / 1g	8.9"x10.8" / 225x275mm	\$470.00
CBK 100a w/USB	100lb / 48kg	0.005lb / 2g	8.9"x10.8" / 225x275mm	\$470.00



Item number	Description	List Price
302000001	Hard carrying case w/Lock	\$85.00
302205006	In-use wet cover	\$20.00
700200057	In-use wet cover (pack of 5)	\$85.00
700200058	In use wet cover (pack of 10)	\$150.00
3074010507	RS-232 to USB adapter	\$50.00
3074010266	RS-232 cable (null-modem)	\$35.00
1120011156	ATP thermal printer	\$335.00
3126011263	Thermal Paper (1 Roll)	\$14.00
3126011281	Thermal Paper (10 Rolls)	\$90.00
600002028	Adam DU software	\$95.00
202000001	Weigh below hook (factory fitted)	\$125.00

Shipping Specs.

Weight:
11lb / 5kg
Dimensions:
15.7"x14.2"x7.5" /
400x360x190mm





Features

- Backlit LCD shows weight, unit weight and count in one convenient location
- Color-coded keys facilitate quick recognition of the most frequently used buttons
- Large, type 304 stainless steel pan allows swift cleaning
- Heavy-duty rubber feet ensure stability of unit
- Rechargeable battery included for operation virtually anywhere
- AC adapter included
- Auto power-off to save energy
- Parts counting with freely selectable sample sizes
- Parts counting optimization automatically refines piece weight as parts are added
- Preset tare function speeds the process of repetitive weighing
- Selectable digital filtering helps minimize effects of vibration and disturbances
- Weighing units: kg, lb

Applications

- Parts counting
- Checkcounting

Model	Capacity	Readability	Pan Size	List Price
CBC 8a	8lb / 4kg	0.0002lb / 0.0001kg	8.9"x10.8" / 225x275mm	\$425.00
CBC 16a	16lb / 8kg	0.0005lb / 0.0002kg	8.9"x10.8" / 225x275mm	\$425.00
CBC 35a	35lb / 16kg	0.001lb / 0.0005kg	8.9"x10.8" / 225x275mm	\$425.00
CBC 70a	70lb / 32kg	0.002lb / 0.001kg	8.9"x10.8" / 225x275mm	\$425.00
CBC 100a	100lb / 48kg	0.005lb / 0.002kg	8.9"x10.8" / 225x275mm	\$425.00
CBC 8a w/USB	8lb / 4kg	0.0002lb / 0.0001kg	8.9"x10.8" / 225x275mm	\$500.00
CBC 16a w/USB	16lb / 8kg	0.0005lb / 0.0002kg	8.9"x10.8" / 225x275mm	\$500.00
CBC 35a w/USB	35lb / 16kg	0.001lb / 0.0005kg	8.9"x10.8" / 225x275mm	\$500.00
CBC 70a w/USB	70lb / 32kg	0.002lb / 0.001kg	8.9"x10.8" / 225x275mm	\$500.00
CBC 100a w/USB	100lb / 48kg	0.005lb / 0.002kg	8.9"x10.8" / 225x275mm	\$500.00



Item number	Description	List Price
302000001	Hard carrying case w/Lock	\$85.00
302205006	In-use wet cover	\$20.00
700200057	In-use wet cover (pack of 5)	\$85.00
700200058	In use wet cover (pack of 10)	\$150.00
3074010507	RS-232 to USB adapter (must order corresponding RS-232 cable)	\$50.00
3074010266	RS-232 cable (null-modem)	\$35.00
1120011156	ATP thermal printer	\$335.00
3126011263	Thermal Paper (1 Roll) (for item no. 1120011156-ATP printer)	\$14.00
3126011281	Thermal Paper (10 Rolls) (for item no. 1120011156-ATP printer)	\$90.00
600002028	Adam DU software	\$95.00

Shipping Specs.

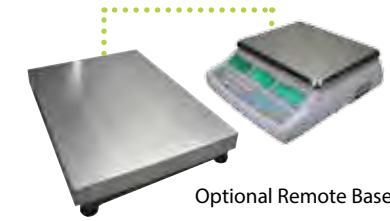
Weight:
11lb / 5kg
Dimensions:
15.7"x14.2"x7.5" /
400x360x190mm



Table of Contents

Features

- Backlit LCD shows weight, unit weight and count in one convenient location
- Programmable backlight can be set to "always on", "always off" or "light only when weighing"
- Color-coded keys facilitate quick recognition of the most frequently used buttons
- Product Look Up (PLU) memory locations for storing a range of items for recall as needed
- Parts counting with freely selectable sample sizes
- Parts counting optimization automatically refines piece weight as parts are added
- Programmable for counting to a preset number of parts
- Preset tare function speeds the process of repetitive weighing
- RS-232 interface for connection to computers and printers
- Optional USB interface simplifies data communication
- Supports connection to platforms with up to four load cells
- Large, type 304 stainless steel pan allows swift cleaning
- Overload protection helps prevent damage to internal components
- Rechargeable battery included for operation virtually anywhere
- Programmable auto power-off to save energy
- AC adapter included
- Security password control prevents unauthorized access
- Weighing units: kg, lb



Optional Remote Base

Applications

- Weighing
- Parts counting
- Checkcounting
- Accumulation

Model	Capacity	Readability	Pan Size	List Price
CBD 8a	8lb / 4kg	0.0002lb / 0.1g	8.9"x10.8" / 225x275mm	\$645.00
CBD 16a	16lb / 8kg	0.0005lb / 0.2g	8.9"x10.8" / 225x275mm	\$645.00
CBD 35a	35lb / 16kg	0.001lb / 0.5g	8.9"x10.8" / 225x275mm	\$645.00
CBD 70a	70lb / 32kg	0.002lb / 1g	8.9"x10.8" / 225x275mm	\$645.00
CBD 100a	100lb / 48kg	0.005lb / 2g	8.9"x10.8" / 225x275mm	\$645.00
CBD 8a w/USB	8lb / 4kg	0.0002lb / 0.1g	8.9"x10.8" / 225x275mm	\$720.00
CBD 16a w/USB	16lb / 8kg	0.0005lb / 0.2g	8.9"x10.8" / 225x275mm	\$720.00
CBD 35a w/USB	35lb / 16kg	0.001lb / 0.5g	8.9"x10.8" / 225x275mm	\$720.00
CBD 70a w/USB	70lb / 32kg	0.002lb / 1g	8.9"x10.8" / 225x275mm	\$720.00
CBD 100a w/USB	100lb / 48kg	0.005lb / 2g	8.9"x10.8" / 225x275mm	\$720.00



Item number	Description	List Price
302000001	Hard carrying case w/Lock	\$85.00
302205006	In-use wet cover	\$20.00
700200057	In-use wet cover (pack of 5)	\$85.00
700200058	In use wet cover (pack of 10)	\$150.00
3074010507	RS-232 to USB adapter (must order corresponding RS-232 cable)	\$50.00
3074010266	RS-232 cable (null-modem)	\$35.00
1120011156	ATP thermal printer	\$335.00
3126011263	Thermal Paper (1 Roll) (for item no. 1120011156-ATP printer)	\$14.00
3126011281	Thermal Paper (10 Rolls) (for item no. 1120011156-ATP printer)	\$90.00
600002028	Adam DU software	\$95.00

Shipping Specs.

Weight:
11lb / 5kg
Dimensions:
15.7"x14.2"x7.5" /
400x360x190mm



Table of Contents



Features

- Vivid, backlit LCD easily visible in any lighting conditions
- Capacity tracker built into display for easily monitoring possible overloads
- Checkweighing LEDs light to clearly show under, over and acceptable limits
- Checkweighing with audible alarm
- Parts counting with freely selectable sample sizes
- Hold function freezes the displayed weight, allowing time to lapse without losing the result
- Large, type 304 stainless steel pan allows swift cleaning
- Sealed keypad protects against dirt and accidental spills
- Audible overload alarm warns when capacity has been exceeded
- RS-232 interface for connection to computers and printers
- Rechargeable battery included for operation virtually anywhere
- AC adapter included
- Weighing units: g, kg, lb, lb:oz, oz

Applications

- Weighing
- Parts counting
- Percentage weighing
- Checkweighing
- Dynamic / animal weighing
- Accumulation



Model	Capacity	Readability	Pan Size	List Price
GBK 16a	16lb / 8kg	0.0002lb / 0.1g	11.8"x15.7" / 300x400mm	\$575.00
GBK 35a	35lb / 16kg	0.001lb / 0.5g	11.8"x15.7" / 300x400mm	\$475.00
GBK 70a	70lb / 32kg	0.002lb / 1g	11.8"x15.7" / 300x400mm	\$525.00
GBK 130a	130lb / 60kg	0.005lb / 2g	11.8"x15.7" / 300x400mm	\$525.00
GBK 260a	260lb / 120kg	0.01lb / 5g	11.8"x15.7" / 300x400mm	\$555.00
GBK 15aM	15lb / 6kg	0.002lb / 1g	11.8"x15.7" / 300x400mm	\$650.00
GBK 30aM	30lb / 15kg	0.005lb / 2g	11.8"x15.7" / 300x400mm	\$550.00
GBK 60aM	60lb / 30kg	0.01lb / 5g	11.8"x15.7" / 300x400mm	\$600.00
GBK 150aM	150lb / 60kg	0.02lb / 0.01kg	11.8"x15.7" / 300x400mm	\$600.00
GBK 300aM	300lb / 150kg	0.05lb / 0.02kg	11.8"x15.7" / 300x400mm	\$630.00



M models are NTEP and Measurement Canada approved

Item number	Description	List Price
3052010526	In-use wet cover	\$20.00
3074010266	RS-232 cable (null-modem)	\$35.00
3074010507	RS-232 to USB adapter (must order corresponding RS-232 cable)	\$50.00
1120011156	ATP thermal printer	\$335.00
3126011263	Thermal Paper (1 Roll) (for item no. 1120011156-ATP printer)	\$14.00
3126011281	Thermal Paper (10 Rolls) (for item no. 1120011156-ATP printer)	\$90.00
600002028	Adam DU software	\$95.00

Shipping Specs.

Weight:
20lb / 9kg
Dimensions:
30.7"x15.7"x6.3" /
780x400x160mm



Table of Contents

Features

- Vivid, backlit LCD easily visible in any lighting conditions
- Capacity tracker built into display for easily monitoring possible overloads
- Checkweighing LEDs light to clearly show under, over and acceptable limits
- Checkweighing with audible alarm
- Parts counting with freely selectable sample sizes
- Hold function freezes the displayed weight, allowing time to lapse without losing the result
- Rugged construction stands up to industrial use
- Large, type 304 stainless steel pan allows swift cleaning
- Sealed keypad protects against dirt and accidental spills
- RS-232 interface for connection to computers and printers
- Rechargeable battery included for operation virtually anywhere
- AC adapter included
- Programmable auto power-off to save energy
- Selectable digital filtering for animal/dynamic weighing delivers stable results for moving subjects
- Weighing units: g, kg, lb, lb:oz, oz

Applications

- Weighing
- Parts counting
- Percentage weighing
- Checkweighing
- Checkcounting
- Dynamic / animal weighing



Model	Capacity	Readability	Pan Size	List Price
GFK 165a	165lb / 75kg	0.01lb / 5g	15.7"x19.7" / 400x500mm	\$595.00
GFK 165aH	165lb / 75kg	0.002lb / 1g	15.7"x19.7" / 400x500mm	\$875.00
GFK 330a	330lb / 150kg	0.02lb / 0.01kg	15.7"x19.7" / 400x500mm	\$595.00
GFK 330aH	330lb / 150kg	0.005lb / 2g	15.7"x19.7" / 400x500mm	\$875.00
GFK 660a	660lb / 300kg	0.05lb / 0.02kg	15.7"x19.7" / 400x500mm	\$645.00
GFK 1320a	1320lb / 600kg	0.1lb / 0.05kg	23.6"x31.5" / 600x800mm	\$895.00
GFK 150aM	150lb / 60kg	0.02lb / 0.01kg	15.7"x19.7" / 400x500mm	\$670.00
GFK 300aM	300lb / 150kg	0.05lb / 0.02kg	15.7"x19.7" / 400x500mm	\$670.00
GFK 600aM	660lb / 300kg	0.1lb / 0.05kg	15.7"x19.7" / 400x500mm	\$720.00

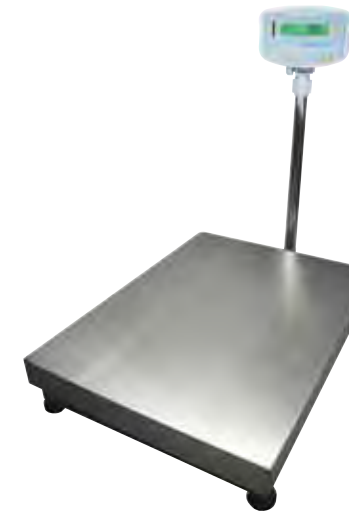
Shipping Specs.

Weight:
33lb / 15kg
Dimensions:
18.1"x35.2"x8.3" /
460x895x210mm

GFK 1320a:
Weight:
71lb / 32kg
Dimensions:
26.2"x46.5"x8.7" /
665x1180x220mm

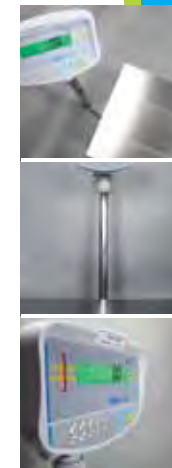


Table of Contents



M models are NTEP and Measurement Canada approved

Item number	Description	List Price
3052010526	In-use wet cover	\$20.00
3074010266	RS-232 cable (null-modem)	\$35.00
3074010507	RS-232 to USB adapter (must order corresponding RS-232 cable)	\$50.00
1120011156	ATP thermal printer	\$335.00
3126011263	Thermal Paper (1 Roll) (for item no. 1120011156-ATP printer)	\$14.00
3126011281	Thermal Paper (10 Rolls) (for item no. 1120011156-ATP printer)	\$90.00
600002028	Adam DU software	\$95.00





Features

- Vivid, backlit LCD easily visible in any lighting conditions
- Capacity tracker built into display for easily monitoring possible overloads
- Color-coded keys facilitate quick recognition of the most frequently used buttons
- Checkweighing LEDs light to clearly show under, over and acceptable limits
- Checkweighing with audible alarm
- Parts counting with preset sample sizes
- Hold function freezes the displayed weight, allowing time to lapse without losing the result
- Selectable digital filtering for animal/dynamic weighing delivers stable results for moving subjects
- Rugged construction stands up to industrial use
- Sealed keypad protects against dirt and accidental spills
- Audible overload alarm warns when capacity has been exceeded
- Large, type 304 stainless steel pan allows swift cleaning
- RS-232 interface for connection to computers and printers
- Rechargeable battery included for operation virtually anywhere
- AC adapter included
- Programmable auto power-off to save energy
- Wall-mount bracket for placing indicator on vertical surface
- Weighing units: g, kg, lb, lb:oz, N, oz

Applications

- Weighing
- Parts counting
- Checkweighing
- Dynamic / animal weighing
- Percentage weighing

Model	Capacity	Readability	Pan Size	List Price
ABK 16a	16lb / 8000g	0.0005lb / 0.2g	11.8"x15.7" / 300x400mm	\$715.00
ABK 35a	35lb / 16kg	0.001lb / 0.5g	11.8"x15.7" / 300x400mm	\$615.00
ABK 70a	70lb / 32kg	0.002lb / 1g	11.8"x15.7" / 300x400mm	\$665.00
ABK 130a	130lb / 60kg	0.005lb / 2g	11.8"x15.7" / 300x400mm	\$665.00
ABK 260a	260lb / 120kg	0.01lb / 5g	11.8"x15.7" / 300x400mm	\$695.00



Optional relay box allows control of external devices.

Item number	Description	List Price
700400103	RS-232 cable	\$35.00
3074010507	RS-232 to USB adapter (must order corresponding RS-232 cable)	\$50.00
1120011156	ATP thermal printer	\$335.00
3126011263	Thermal Paper (1 Roll) (for item no. 1120011156-ATP printer)	\$14.00
3126011281	Thermal Paper (10 Rolls) (for item no. 1120011156-ATP printer)	\$90.00
1100011297	AE402 relay box	\$185.00
600002028	Adam DU software	\$95.00
3074010266	RS-232 cable (null-modem)	\$35.00

Shipping Specs.

Weight:
20lb / 9kg
Dimensions:
30.7"x15.7"x6.3" /
780x400x160mm



Features

- Vivid, backlit LCD easily visible in any lighting conditions
- Capacity tracker built into display for easily monitoring possible overloads
- Color-coded keys facilitate quick recognition of the most frequently used buttons
- Checkweighing LEDs light to clearly show under, over and acceptable limits
- Checkweighing with audible alarm
- Parts counting with preset sample sizes
- Hold function freezes the displayed weight, allowing time to lapse without losing the result
- Selectable digital filtering for animal/dynamic weighing delivers stable results for moving subjects
- Rugged construction stands up to industrial use
- Sealed keypad protects against dirt and accidental spills
- Audible overload alarm warns when capacity has been exceeded
- Large, type 304 stainless steel pan allows swift cleaning
- RS-232 interface for connection to computers and printers
- Rechargeable battery included for operation virtually anywhere
- AC adapter included
- Programmable auto power-off to save energy
- Wall-mount bracket for placing indicator on vertical surface
- Weighing units: g, kg, lb, lb:oz, oz, N

Applications

- Weighing
- Parts counting
- Percentage weighing
- Checkweighing
- Dynamic / animal weighing



Model	Capacity	Readability	Pan Size	List Price
AFK 165a	165lb / 75kg	0.01lb / 0.005kg	15.7"x19.7" / 400x500mm	\$745.00
AFK 330a	330lb / 150kg	0.02lb / 0.01kg	15.7"x19.7" / 400x500mm	\$745.00
AFK 660a	660lb / 300kg	0.05lb / 0.02kg	15.7"x19.7" / 400x500mm	\$795.00
AFK 1320a	1320lb / 600kg	0.1lb / 0.05kg	23.6"x31.5" / 600x800mm	\$1,045.00



Shipping Specs.

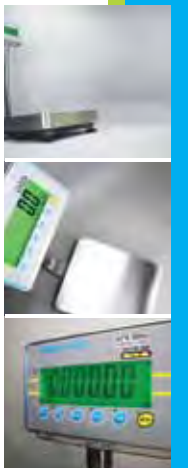
Weight:
33lb / 15kg
Dimensions:
18.1"x35.2"x8.3" /
460x895x210mm

AFK 1320a
Weight:
62lb / 28kg
Dimensions:
26.2"x46.5"x8.7" /
665x1180x220mm



Optional relay box allows control of external devices.

Item number	Description	List Price
700400103	RS-232 cable	\$35.00
3074010507	RS-232 to USB adapter (must order corresponding RS-232 cable)	\$50.00
1120011156	ATP thermal printer	\$335.00
3126011263	Thermal Paper (1 Roll) (for item no. 1120011156-ATP printer)	\$14.00
3126011281	Thermal Paper (10 Rolls) (for item no. 1120011156-ATP printer)	\$90.00
1100011297	AE402 relay box	\$185.00
600002028	Adam DU software	\$95.00
3074010266	RS-232 cable (null-modem)	\$35.00





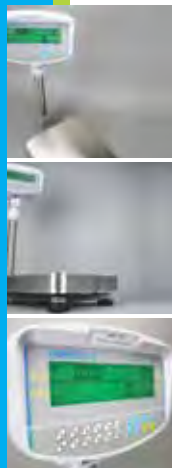
Features

- Backlit LCD shows weight, unit weight and count in one convenient location
- Programmable backlight can be set to “always on”, “always off” or “light only when weighing”
- Remote display can be placed anywhere near the base unit for convenient viewing
- Rugged construction stands up to industrial use
- Large, type 304 stainless steel pan allows swift cleaning
- Color-coded keys facilitate quick recognition of the most frequently used buttons
- RS-232 interface for connection to computers and printers
- Printouts include date and time for data tracking within Good Laboratory Practices (GLP) guidelines
- Audible overload alarm warns when capacity has been exceeded
- Internal counting resolution 1:600,000 for precision results
- Parts counting with freely selectable sample sizes
- Parts counting optimization automatically refines piece weight as parts are added
- Preset tare function speeds the process of repetitive weighing
- Rechargeable battery included for operation virtually anywhere
- AC adapter included
- Programmable auto power-off to save energy
- Weighing units: kg, lb

Applications

- Weighing
- Parts counting
- Checkcounting

Model	Capacity	Readability	Pan Size	List Price
GBC 35a	35lb / 16kg	0.001lb / 0.5g	11.8”x15.7” / 300x400mm	\$555.00
GBC 70a	70lb / 32kg	0.002lb / 1g	11.8”x15.7” / 300x400mm	\$595.00
GBC 130a	130lb / 60kg	0.005lb / 2g	11.8”x15.7” / 300x400mm	\$595.00



Item number	Description	List Price
3052010526	In-use wet cover	\$20.00
3074010266	RS-232 cable (null-modem)	\$35.00
3074010507	RS-232 to USB adapter	\$50.00
(must order corresponding RS-232 cable)		
1120011156	ATP thermal printer	\$335.00
3126011263	Thermal Paper (1 Roll)	\$14.00
(for item no. 1120011156-ATP printer)		
3126011281	Thermal Paper (1 Roll) (pack of 10)	\$90.00
(for item no. 1120011156-ATP printer)		
600002028	Adam DU software	\$95.00

Shipping Specs.

Weight:
20lb / 9kg
Dimensions:
30.7”x15.7”x6.3” /
780x400x160mm



Table of Contents

Features

- Backlit LCD shows weight, unit weight and count in one convenient location
- Programmable backlight can be set to “always on”, “always off” or “light only when weighing”
- Remote display can be placed anywhere near the base unit for convenient viewing
- Rugged construction stands up to industrial use
- Large, type 304 stainless steel pan allows swift cleaning
- Color-coded keys facilitate quick recognition of the most frequently used buttons
- RS-232 interface for connection to computers and printers
- Printouts include date and time for data tracking within Good Laboratory Practices (GLP) guidelines
- Audible overload alarm warns when capacity has been exceeded
- Internal counting resolution 1:600,000 for precision results
- Parts counting with freely selectable sample sizes
- Parts counting optimization automatically refines piece weight as parts are added
- Preset tare function speeds the process of repetitive weighing
- Rechargeable battery included for operation virtually anywhere
- AC adapter included
- Programmable auto power-off to save energy
- Weighing units: kg, lb

Applications

- Weighing
- Parts counting
- Checkcounting



Model	Capacity	Readability	Pan Size	List Price
GFC 165a	165lb / 75kg	0.01lb / 5g	15.7”x19.7” / 400x500mm	\$695.00
GFC 330a	330lb / 150kg	0.02lb / 0.01kg	15.7”x19.7” / 400x500mm	\$695.00
GFC 660a	660lb / 300kg	0.05lb / 0.02kg	15.7”x19.7” / 400x500mm	\$795.00



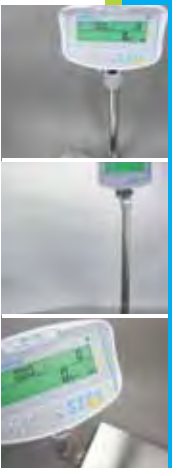
Item number	Description	List Price
3052010526	In-use wet cover	\$20.00
3074010266	RS-232 cable (null-modem)	\$35.00
3074010507	RS-232 to USB adapter	\$50.00
(must order corresponding RS-232 cable)		
1120011156	ATP thermal printer	\$335.00
3126011263	Thermal Paper (1 Roll)	\$14.00
(for item no. 1120011156-ATP printer)		
3126011281	Thermal Paper (10 Rolls)	\$90.00
(for item no. 1120011156-ATP printer)		
600002028	Adam DU software	\$95.00

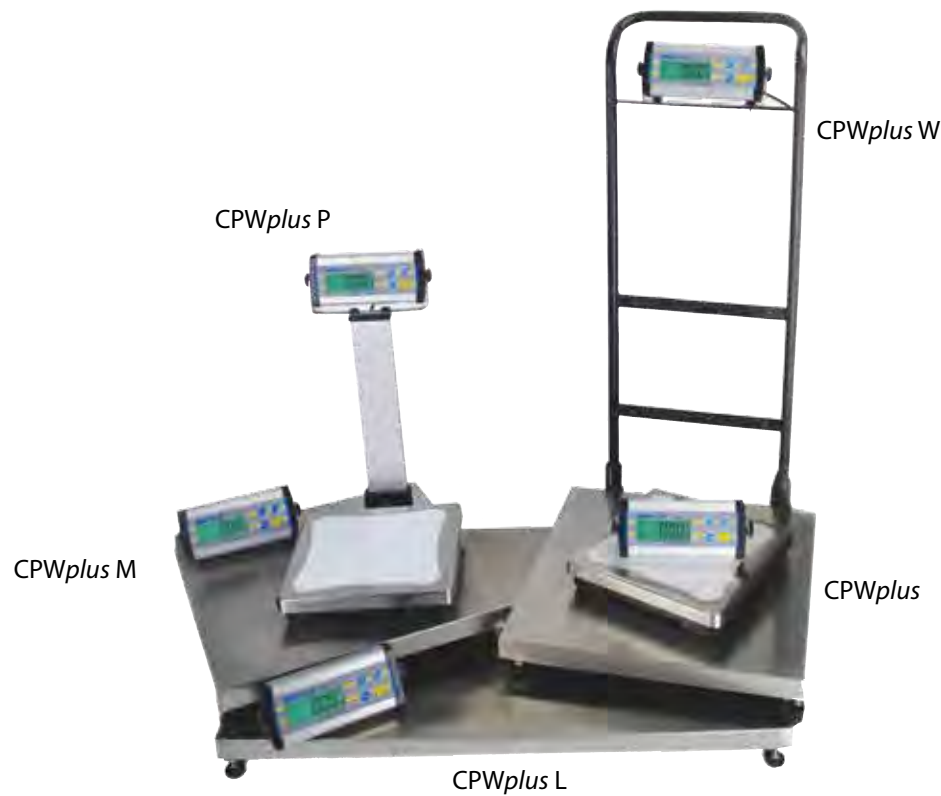
Shipping Specs.

Weight:
33lb / 15kg
Dimensions:
18.1”x35.2”x8.3” /
460x895x210mm



Table of Contents





Features

- Vivid, backlit LCD easily visible in any lighting conditions
- Programmable backlight can be set to "always on", "always off" or "light only when weighing"
- Color-coded keys facilitate quick recognition of the most frequently used buttons
- RS-232 interface for connection to computers and printers
- Robust metal housing protects internal components in harsh environments
- Large, type 304 stainless steel pan allows swift cleaning
- Wall-mount bracket for placing indicator on vertical surface
- Hold function freezes the displayed weight, allowing time to lapse without losing the result
- Auto power-off to save energy
- Weighing units: kg, lb, lb:oz, oz
- Basic model has 6 x AA battery option, while models M,L, and W utilize a rechargeable battery. All models operate on an adapter.

Applications

- Weighing
- Display hold

Item number	Description	List Price
700100099	Hard carrying case w/ lock	\$85.00
3074010266	RS-232 cable (null-modem)	\$35.00
3074010507	RS-232 to USB adapter (must order corresponding RS-232 cable)	\$50.00
1120011156	ATP thermal printer	\$335.00
3126011263	Thermal Paper (1 Roll) (for item no. 1120011156-ATP printer)	\$14.00
3126011281	Thermal Paper (10 Rolls) (for item no. 1120011156-ATP printer)	\$90.00
700200059	Rubber Non-Slip Mat for CPWplus L Only	\$35.00
600002028	Adam DU software	\$95.00



Model	Capacity	Readability	Pan Size	List Price
CPWplus 6	13lb / 6kg	0.005lb / 0.002kg	11.8"x11.8" / 300x300mm	\$195.00
CPWplus 15	33lb / 15kg	0.01lb / 0.005kg	11.8"x11.8" / 300x300mm	\$195.00
CPWplus 35	75lb / 35kg	0.02lb / 0.01kg	11.8"x11.8" / 300x300mm	\$195.00
CPWplus 75	165lb / 75kg	0.05lb / 0.02kg	11.8"x11.8" / 300x300mm	\$195.00
CPWplus 150	330lb / 150kg	0.1lb / 0.05kg	11.8"x11.8" / 300x300mm	\$205.00
CPWplus 200	440lb / 200kg	0.1lb / 0.05kg	11.8"x11.8" / 300x300mm	\$215.00
CPWplus 6P	13lb / 6kg	0.005lb / 0.002kg	11.8"x11.8" / 300x300mm	\$280.00
CPWplus 15P	33lb / 15kg	0.01lb / 0.005kg	11.8"x11.8" / 300x300mm	\$280.00
CPWplus 35P	75lb / 35kg	0.02lb / 0.01kg	11.8"x11.8" / 300x300mm	\$280.00
CPWplus 75P	165lb / 75kg	0.05lb / 0.02kg	11.8"x11.8" / 300x300mm	\$280.00
CPWplus 150P	330lb / 150kg	0.1lb / 0.05kg	11.8"x11.8" / 300x300mm	\$290.00
CPWplus 200P	440lb / 200kg	0.1lb / 0.05kg	11.8"x11.8" / 300x300mm	\$300.00
CPWplus 35W	75lb / 35kg	0.02lb / 0.01kg	19.7"x19.7" / 500x500mm	\$425.00
CPWplus 75W	165lb / 75kg	0.05lb / 0.02kg	19.7"x19.7" / 500x500mm	\$435.00
CPWplus 150W	330lb / 150kg	0.1lb / 0.05kg	19.7"x19.7" / 500x500mm	\$445.00
CPWplus 200W	440lb / 200kg	0.1lb / 0.05kg	19.7"x19.7" / 500x500mm	\$455.00
CPWplus 35M	75lb / 35kg	0.02lb / 0.01kg	19.7"x19.7" / 500x500mm	\$350.00
CPWplus 75M	165lb / 75kg	0.05lb / 0.02kg	19.7"x19.7" / 500x500mm	\$360.00
CPWplus 150M	330lb / 150kg	0.1lb / 0.05kg	19.7"x19.7" / 500x500mm	\$370.00
CPWplus 200M	440lb / 200kg	0.1lb / 0.05kg	19.7"x19.7" / 500x500mm	\$380.00
CPWplus 35L	75lb / 35kg	0.02lb / 0.01kg	35.4"x23.6" / 900x600mm	\$525.00
CPWplus 75L	165lb / 75kg	0.05lb / 0.02kg	35.4"x23.6" / 900x600mm	\$535.00
CPWplus 150L	330lb / 150kg	0.1lb / 0.05kg	35.4"x23.6" / 900x600mm	\$545.00
CPWplus 200L	440lb / 200kg	0.1lb / 0.05kg	35.4"x23.6" / 900x600mm	\$555.00
CPWplus 300L	660lb / 300kg	0.2lb / 0.1kg	35.4"x23.6" / 900x600mm	\$575.00



Shipping Specs.

Weight: 11lb / 5kg
Dimensions: 18.9"x15"x4.7" / 480x380x120mm

CPWplus-P:
Weight: 15lb / 7kg
Dimensions: 18"x21"x9" / 457x533x229mm

CPWplus-W:
Weight: 44lb / 20kg
Dimensions: 24"x40.9"x5.1" / 610x1040x130mm

CPWplus-M:
Weight: 26lb / 12kg
Dimensions: 22"x22.4"x5.5" / 560x570x140mm

CPWplus-L:
Weight: 40lb / 18kg
Dimensions: 28.3"x42.9"x4.9" / 720x1090x125mm



Features

- Backlit LCD shows weight, unit List Price and total List Price, to provide all key information simultaneously
- Rear display mounted on a pillar or back of the scale lets customers see key data
- Color-coded keys facilitate quick recognition of the most frequently used buttons
- IP66 rated for protection against water and dust
- Sealed keypad protects against dirt and accidental spills
- Large, type 304 stainless steel pan allows swift cleaning
- Overload protection helps prevent damage to internal components
- Level indicator and adjusting feet ensure proper balance setup for optimum weighing results
- Preset tare function speeds the process of repetitive weighing
- List Price displayed in choice of available currencies
- Switchable between List Price per kg and List Price per 100g or List Price per lb
- Selectable auto-clear function enables the last item to be reset each time the scale returns to zero
- Security password control prevents unauthorized access
- Rechargeable battery included for operation virtually anywhere
- AC adapter included
- Programmable auto power-off to save energy
- Weighing units: kg, lb

Applications

- Weighing
- List Price computing

Model	Capacity	Readability	Pan Size	List Price
WBZ 6a	6lb / 3kg	0.002lb / 1g	8.3"x6.8" / 210x173mm	\$355.00
WBZ 15a	15lb / 6kg	0.005lb / 2g	8.3"x6.8" / 210x173mm	\$355.00
WBZ 30a	30lb / 15kg	0.01lb / 5g	8.3"x6.8" / 210x173mm	\$355.00



NTEP and Measurement Canada approved

Item number	Description	List Price
303200002	In-use wet cover (pack of 10)	\$150.00
303200003	In-use wet cover (pack of 20)	\$280.00
303209190	In-use wet cover	\$20.00



Shipping Specs.

Weight:
9lb / 4kg
Dimensions:
11"x14.2"x8.7" /
280x360x220mm



Table of Contents

Features

- Vivid, backlit LCD easily visible in any lighting conditions
- Capacity tracker built into display for easily monitoring possible overloads
- Optional rear display doubles equipment placement possibilities for easy viewing
- Color-coded keys facilitate quick recognition of the most frequently used buttons
- Checkweighing LEDs light to clearly show under, over and acceptable limits
- IP66 rated for protection against water and dust
- Sealed keypad protects against dirt and accidental spills
- Large, type 304 stainless steel pan allows swift cleaning
- Overload protection helps prevent damage to internal components
- Heavy-duty rubber feet ensure stability of unit
- Rechargeable battery included for operation virtually anywhere
- AC adapter included
- Programmable auto power-off to save energy
- Weighing units: g, kg, lb, lb:oz

Applications

- Weighing
- Checkweighing



Model	Capacity	Readability	Pan Size	List Price
WBW 5a	5lb / 2kg	0.0005lb / 0.2g	8.3"x6.8" / 210x173mm	\$305.00
WBW 9a	9lb / 4kg	0.001lb / 0.5g	8.3"x6.8" / 210x173mm	\$305.00
WBW 18a	18lb / 8kg	0.002lb / 1g	8.3"x6.8" / 210x173mm	\$305.00
WBW 35a	35lb / 16kg	0.005lb / 2g	8.3"x6.8" / 210x173mm	\$305.00
WBW 6aM	6lb / 3kg	0.002lb / 1g	8.3"x6.8" / 210x173mm	\$325.00
WBW 15aM	15lb / 6kg	0.005lb / 2g	8.3"x6.8" / 210x173mm	\$325.00
WBW 30aM	30lb / 15kg	0.01lb / 5g	8.3"x6.8" / 210x173mm	\$325.00



M models are NTEP and Measurement Canada approved

Item number	Description	List Price
303200002	In-use wet cover (pack of 10)	\$150.00
303200003	In-use wet cover (pack of 20)	\$280.00
303209190	In-use wet cover	\$20.00



Shipping Specs.

Weight:
9lb / 4kg
Dimensions:
11"x14.2"x8.7" /
280x360x220mm



Table of Contents





Features

- Vivid, backlit LCD easily visible in any lighting conditions
- Capacity tracker built into display for easily monitoring possible overloads
- Color-coded keys facilitate quick recognition of the most frequently used buttons
- IP66 rated for protection against water and dust
- Sealed keypad protects against dirt and accidental spills
- Selectable digital filtering for animal/dynamic weighing delivers stable results for moving subjects
- Checkweighing LEDs light to clearly show under, over and acceptable limits
- Rugged stainless steel construction for ultimate durability
- Heavy-duty rubber feet ensure stability of unit
- Large, type 304 stainless steel pan allows swift cleaning
- RS-232 interface for connection to computers and printers
- Rechargeable battery included for operation virtually anywhere
- AC adapter included
- Programmable auto power-off to save energy
- Weighing units: g, kg, lb, lb:oz, oz, N

Applications

- Weighing
- Parts counting
- Percentage weighing
- Checkweighing
- Dynamic / animal weighing

Model	Capacity	Readability	Pan Size	List Price
WSK 16a	16lb / 8kg	0.001lb / 0.5g	9.8"x9.8" / 250x250mm	\$825.00
WSK 35a	35lb / 16kg	0.002lb / 1g	9.8"x9.8" / 250x250mm	\$825.00
WSK 70a	70lb / 32kg	0.005lb / 2g	9.8"x9.8" / 250x250mm	\$825.00
WBK 70aH	70lb / 32kg	0.002lb / 1g	11.8"x15.7" / 300x400mm	\$1,125.00
WBK 70a	70lb / 32kg	0.005lb / 2g	11.8"x15.7" / 300x400mm	\$925.00
WBK 165a	165lb / 75kg	0.01lb / 5g	11.8"x15.7" / 300x400mm	\$925.00
WFK 165aH	165lb / 75kg	0.002lb / 1g	15.7"x19.7" / 400x500mm	\$1,475.00
WFK 165a	165lb / 75kg	0.01lb / 5g	15.7"x19.7" / 400x500mm	\$1,275.00
WFK 330a	330lb / 150kg	0.02lb / 0.01kg	15.7"x19.7" / 400x500mm	\$1,275.00
WLK 330a	330lb / 150kg	0.02lb / 0.01kg	17.7"x23.6" / 450x600mm	\$1,475.00

Shipping Specs.

WSK:
 Weight: 18lb / 8kg
 Dimensions: 16"x24"x7" / 406x610x178mm

WBK:
 Weight: 24lb / 11kg
 Dimensions: 30.7"x15.7"x6.3" / 780x400x160mm

WFK:
 Weight: 33lb / 15kg
 Dimensions: 18.1"x35.2"x8.3" / 460x895x210mm



Optional relay box allows control of external devices.

Item number	Description	List Price
1120011156	ATP thermal printer	\$335.00
3126011263	Thermal Paper (1 Roll) (for item no. 1120011156-ATP printer)	\$14.00
3126011281	Thermal Paper (10 Rolls) (for item no. 1120011156-ATP printer)	\$90.00
1100011297	AE402 relay box	\$185.00



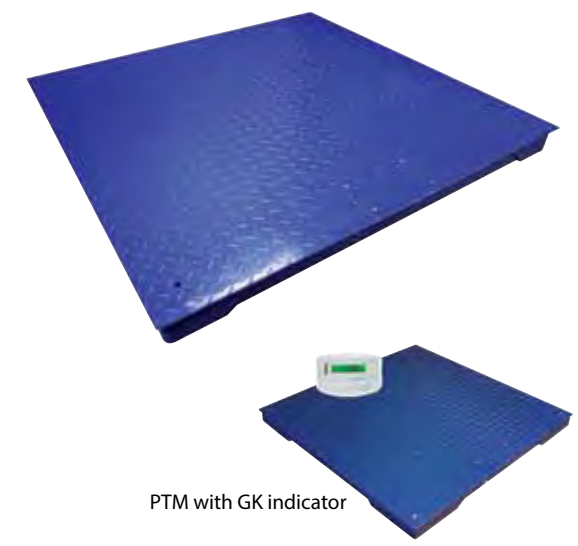
Table of Contents

Features

- Rugged construction stands up to industrial use
- Diamond plate surface for added grip
- Approximately three-meter/10-foot shielded cable
- Optional ramps facilitate loading and unloading
- Can be used with one of several Adam indicators
- Models shown with and without indicators for indicator spec refer to indicator brochure
- Adjustable leveling feet help optimize setup
- Approximately three-meter/10-foot shielded cable

Applications

- Weighing
- Parts counting
- Checkweighing
- Dynamic / animal weighing



PTM with GK indicator

Model	Capacity	Readability	Pan Size	List Price
PT 112	2500lb / 1000kg	0.5lb / 0.2kg	47.2"x47.2" / 1200x1200mm	\$900.00
PT 312-5	5000lb / 3000kg	1lb / 0.5kg	47.2"x47.2" / 1200x1200mm	\$900.00
PT 312-10	10000lb / 3000kg	2lb / 1kg	47.2"x47.2" / 1200x1200mm	\$900.00
PT 112 [GK]	2500lb / 1000kg	0.5lb / 0.2kg	47.2"x47.2" / 1200x1200mm	\$1,095.00
PT 112 [AE402]	2500lb / 1000kg	0.5lb / 0.2kg	47.2"x47.2" / 1200x1200mm	\$1,125.00
PT 312-5 [GK]	5000lb / 3000kg	1lb / 0.5kg	47.2"x47.2" / 1200x1200mm	\$1,095.00
PT 312-10 [GK]	10000lb / 4500kg	2lb / 1kg	47.2"x47.2" / 1200x1200mm	\$1,095.00
PT 312-5 [AE402]	5000lb / 3000kg	1lb / 0.5kg	47.2"x47.2" / 1200x1200mm	\$1,125.00
PT 312-10 [AE402]	10000lb / 4500kg	2lb / 1kg	47.2"x47.2" / 1200x1200mm	\$1,125.00
PT 112M	2500lb / 1000kg	0.5lb / 0.2kg	47.2"x47.2" / 1200x1200mm	\$1,050.00
PT 312-5M	5000lb / 3000kg	1lb / 0.5kg	47.2"x47.2" / 1200x1200mm	\$1,050.00
PT 112M [GKaM]	2500lb / 1000kg	0.5lb / 0.2kg	47.2"x47.2" / 1200x1200mm	\$1,285.00
PT 312-5M [GKaM]	5000lb / 3000kg	1lb / 0.5kg	47.2"x47.2" / 1200x1200mm	\$1,285.00



Item number	Description	List Price
700100200	Mild Steel Ramp - PT 12R 1200mm wide	\$275.00

Shipping Specs.

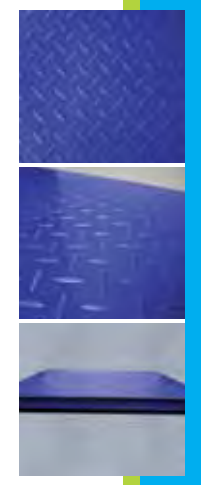
Weight: 179lb / 81kg
 Dimensions: 48"x48.4"x3.9" / 1220x1230x100mm



Table of Contents

For information on indicators, see pages.

AE402.....page 31
 GK & GKaM.....page 33





Features

- Rugged construction stands up to industrial use
- Diamond plate surface for added grip
- Integrated wheels and handles permit easy movement
- Built-in ramps on each side enable easy access
- Heavy-duty rubber feet ensure stability of unit
- Adjustable leveling feet help optimize setup
- Approximately three-meter/10-foot shielded cable
- Can be used with one of several Adam indicators

Applications

- Weighing
- Parts counting
- Percentage weighing
- Checkweighing
- Dynamic / animal weighing

Model	Capacity	Readability	Pan Size	List Price
PTM 500	1100lb / 500kg	0.2lb / 0.1kg	29.9"x22.8" / 760x580mm	\$900.00
PTM 500 [AE402]	1100lb / 500kg	0.2lb / 0.1kg	31.5"x29.9" / 800x760mm	\$1,125.00
PTM 500 [GK]	1100lb / 500kg	0.2lb / 0.1kg	31.5"x29.9" / 800x760mm	\$1,095.00



For information on indicators, see pages.

AE402.....page 31
GKaM.....page 33

Accessories for Indicators:

Item number	Description	List Price
3074010266	RS-232 cable (null-modem)	\$35.00
3074010507	RS-232 to USB adapter (must order corresponding RS-232 cable)	\$50.00
1120011156	ATP thermal printer	\$335.00
3126011263	Thermal Paper (1 Roll) (for item no. 1120011156-ATP printer)	\$14.00
3126011281	Thermal Paper (1 Roll) (pack of 10) (for item no. 1120011156-ATP printer)	\$90.00
600002028	Adam DU software	\$95.00

Shipping Specs.

Weight:
84lb / 38kg
Dimensions:
36.2"x44.5"x5.1" /
920x1130x130mm



Table of Contents

Features

- Vivid, backlit LCD easily visible in any lighting conditions
- Capacity tracker built into display for easily monitoring possible overloads
- Programmable backlight can be set to "always on," "always off" or "light only when weighing"
- Color-coded keys facilitate quick recognition of the most frequently used buttons
- Splash-proof housing, keypad and display mean easy cleaning and peace of mind
- Wheels swivel, allowing easy movement
- Checkweighing with audible alarm
- Checkweighing LEDs light to clearly show under, over and acceptable limits
- Parts counting with preset sample sizes
- Audible overload alarm warns when capacity has been exceeded
- RS-232 interface for connection to computers and printers
- Selectable auto-clear function enables the last item to be reset each time the scale returns to zero
- Rechargeable battery included for operation virtually anywhere
- AC adapter included
- Auto power-off to save energy
- Weighing units: kg, lb, lb:oz, oz, N

Applications

- Weighing
- Parts counting
- Percentage weighing
- Checkweighing
- Dynamic / animal weighing



Model	Capacity	Readability	Pan Size	List Price
PTS 5000a [AE402]	5000lb / 2000kg	1lb / 0.5kg	6.3"x47.2" / 160x1200mm	\$1,695.00



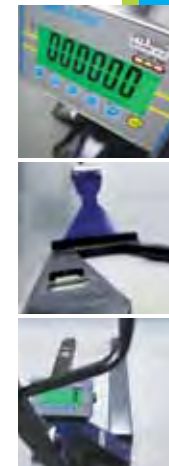
Item number	Description	List Price
700400103	RS-232 cable	\$35.00
3074010507	RS-232 to USB adapter (must order corresponding RS-232 cable)	\$50.00
1120011156	ATP thermal printer	\$335.00
3126011263	Thermal Paper (1 Roll) (for item no. 1120011156-ATP printer)	\$14.00
3126011281	Thermal Paper (10 Rolls) (for item no. 1120011156-ATP printer)	\$90.00
600002028	Adam DU software	\$95.00

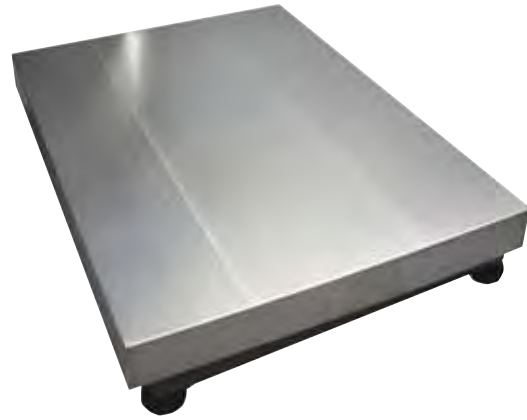
Shipping Specs.

Weight:
344lb / 156kg
Dimensions:
30"x67"x27" /
762x1702x686mm



Table of Contents





Features

- Rugged construction stands up to industrial use
- Overload protection helps prevent damage to internal components
- Large, type 304 stainless steel platform provides durability and allows swift cleaning
- Can be used with one of several Adam indicators
- Stainless steel platform for added durability
- Single point loadcell and cast aluminum base is solid for industrial applications
- Easily connect to Adam's CBD counting scale for dual counting operations

Applications

- Weighing

Model	Capacity	Readability	Pan Size	List Price
GF 165a	165lb / 75kg	0.01lb / 5g	15.7"x19.7" / 400x500mm	\$395.00
GF 330a	330lb / 150kg	0.02lb / 0.01kg	15.7"x19.7" / 400x500mm	\$395.00
GF 660a	660lb / 300kg	0.05lb / 0.02kg	15.7"x19.7" / 400x500mm	\$495.00
GF 1320a	1320lb / 600kg	0.1lb / 0.05kg	23.6"x31.5" / 600x800mm	\$695.00

Shipping Specs.

Weight: 31lb / 14kg
 Dimensions: 18"x36"x19" / 457x914x483mm
 GF 1320a:
 Weight: 31lb / 14kg
 Dimensions: 18"x36"x19" / 457x914x483mm

Features

- Vivid, backlit LCD easily visible in any lighting conditions
- Capacity tracker built into display for easily monitoring possible overloads
- Color-coded keys facilitate quick recognition of the most frequently used buttons
- User-selectable scale division
- IP66 rated for protection against water and dust
- Robust metal housing protects internal components in harsh environments
- Hold function freezes the displayed weight, allowing time to lapse without losing the result
- Checkweighing with audible alarm
- Parts counting with preset sample sizes
- Selectable digital filtering for animal/dynamic weighing delivers stable results for moving subjects
- Wall-mount bracket for placing indicator on vertical surface
- RS-232 interface for connection to computers and printers
- Rechargeable battery included for operation virtually anywhere
- AC adapter included
- Programmable auto power-off to save energy
- Weighing units: g, kg, lb, lb:oz, oz, N

Applications

- Weighing
- Parts counting
- Percentage weighing
- Checkweighing
- Dynamic / animal weighing



Model	List Price
AE 402	\$260.00

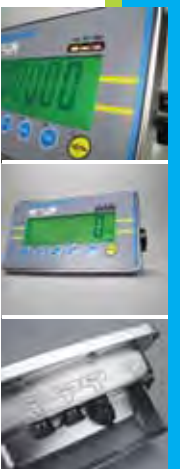


Optional relay box allows control of external devices.

Item number	Description	List Price
700400103	RS-232 cable	\$35.00
3074010507	RS-232 to USB adapter (must order corresponding RS-232 cable)	\$50.00
3074010266	RS-232 cable (null-modem)	\$35.00
3074010267	USB cable	\$35.00
1120011156	ATP thermal printer	\$335.00
3126011263	Thermal Paper (1 Roll) (for item no. 1120011156-ATP printer)	\$14.00
3126011281	Thermal Paper (10 Rolls) (for item no. 1120011156-ATP printer)	\$90.00
1100011297	AE402 relay box	\$185.00
600002028	Adam DU software	\$95.00

Shipping Specs.

Weight: 4lb / 2kg
 Dimensions: 8.3"x11.4"x5.5" / 210x290x140mm





Features

- Backlit LCD shows weight, unit weight and count in one convenient location
- Color-coded keys facilitate quick recognition of the most frequently used buttons
- RS-232 interface for connection to computers and printers
- Wall-mount bracket for placing indicator on vertical surface
- Solid ABS housing is durable for industrial uses
- Internal counting resolution 1:600,000 for precision results
- Audible overload alarm warns when capacity has been exceeded
- Parts counting with freely selectable sample sizes
- Parts counting optimization automatically refines piece weight as parts are added
- Preset tare function speeds the process of repetitive weighing
- Printouts include date and time for data tracking within Good Laboratory Practices (GLP) guidelines
- Selectable digital filtering helps minimize effects of vibration and disturbances
- Rechargeable battery included for operation virtually anywhere
- AC adapter included
- Weighing units: g, kg, lb

Applications

- Weighing
- Parts counting
- Checkcounting

Model	List Price
GC	\$325.00



Item number	Description	List Price
3052010526	In-use wet cover	\$20.00
3074010266	RS-232 cable (null-modem)	\$35.00
3074010507	RS-232 to USB adapter (must order corresponding RS-232 cable)	\$50.00
3074010267	USB cable	\$35.00
1120011156	ATP thermal printer	\$335.00
3126011263	Thermal Paper (1 Roll) (for item no. 1120011156-ATP printer)	\$14.00
3126011281	Thermal Paper (10 Rolls) (for item no. 1120011156-ATP printer)	\$90.00
600002028	Adam DU software	\$95.00

Shipping Specs.

Weight:
7lb / 3kg
Dimensions:
9.1"x11.8"x8.3" /
230x300x210mm



Table of Contents

Features

- Vivid, backlit LCD easily visible in any lighting conditions
- Capacity tracker built into display for easily monitoring possible overloads
- RS-232 interface for connection to computers and printers
- Printouts include date and time for data tracking within Good Laboratory Practices (GLP) guidelines
- Wall-mount bracket for placing indicator on vertical surface
- Checkweighing with audible alarm
- Checkweighing LEDs light to clearly show under, over and acceptable limits
- Parts counting with freely selectable sample sizes
- Parts counting optimization automatically refines piece weight as parts are added
- Programmable for counting to a preset number of parts
- Preset tare function speeds the process of repetitive weighing
- Selectable digital filtering for animal/dynamic weighing delivers stable results for moving subjects
- Programmable capacity and readability for a variety of applications
- Rechargeable battery included for operation virtually anywhere
- AC adapter included
- Weighing units: kg, lb, lb:oz, oz, N

Applications

- Weighing
- Parts counting
- Percentage weighing
- Checkweighing
- Checkcounting
- Dynamic / animal weighing



Model	List Price
GKa	\$225.00
GKaM	\$265.00



M models are NTEP and Measurement Canada approved

Item number	Description	List Price
3052010526	In-use wet cover	\$20.00
3074010266	RS-232 cable (null-modem)	\$35.00
3074010507	RS-232 to USB adapter (must order corresponding RS-232 cable)	\$50.00
3074010267	USB cable	\$35.00
1120011156	ATP thermal printer	\$335.00
3126011263	Thermal Paper (1 Roll) (for item no. 1120011156-ATP printer)	\$14.00
3126011281	Thermal Paper (10 Rolls) (for item no. 1120011156-ATP printer)	\$90.00
600002028	Adam DU software	\$95.00

Shipping Specs.

Weight:
7lb / 3kg
Dimensions:
9.1"x11.8"x8.3" /
230x300x210mm



Table of Contents





Features

- Bright LED display for easy viewing in most environments
- 360-degree rotating hook allows flexible handling of bulky or oversized objects
- Remote control allows safe, hands-free operation
- Rugged construction stands up to industrial use
- Hold function freezes the displayed weight, allowing time to lapse without losing the result
- Rechargeable battery included for operation virtually anywhere
- Programmable auto power-off to save energy
- Weighing units: kg, lb

Applications

- Weighing

Model	Capacity	Readability	List Price
SHS 100a	100lb / 50kg	0.02lb / 0.01kg	\$455.00
SHS 300a	300lb / 150kg	0.05lb / 0.02kg	\$465.00
SHS 600a	600lb / 300kg	0.1lb / 0.05kg	\$475.00



Shipping Specs.

Weight:
4lb / 2kg
Dimensions:
8.3"x12.6"x5.1" /
210x320x130mm



Table of Contents

Features

- Bright LED display for easy viewing in most environments
- 360-degree rotating hook allows flexible handling of bulky or oversized objects
- Rugged construction stands up to industrial use
- Robust metal housing protects internal components in harsh environments
- Remote control allows safe, hands-free operation
- Hold function freezes the displayed weight, allowing time to lapse without losing the result
- Rechargeable battery included for operation virtually anywhere
- Programmable auto power-off to save energy
- Weighing units: kg, lb

Applications

- Weighing

Model	Capacity	Readability	List Price
LHS 1000a	1000lb / 500kg	0.2lb / 0.1kg	\$575.00
LHS 3000a	3000lb / 1500kg	0.5lb / 0.2kg	\$625.00
LHS 4000a	4000lb / 2000kg	1lb / 0.5kg	\$845.00



Shipping Specs.

Weight:
13lb / 6kg
Dimensions:
14.2"x18.1"x7.1" /
360x460x180mm



Table of Contents





Features

- Bright LED display for easy viewing in most environments
- 360-degree rotating hook allows flexible handling of bulky or oversized objects
- Sealed keypad protects against dirt and accidental spills
- Remote control allows safe, hands-free operation
- Rugged construction stands up to industrial use
- Robust metal housing protects internal components in harsh environments
- Hold function freezes the displayed weight, allowing time to lapse without losing the result
- Rechargeable battery included for operation virtually anywhere
- Auto power-off to save energy
- Weighing units: kg, lb

Applications

- Weighing

Model	Capacity	Readability	List Price
IHS 2a	2000lb / 1000kg	0.5lb / 0.2kg	\$1,125.00
IHS 6a	6000lb / 3000kg	1lb / 0.5kg	\$1,225.00
IHS 10a	10000lb / 5000kg	2lb / 1kg	\$1,425.00
IHS 20a	20000lb / 10000kg	5lb / 2kg	\$2,125.00



Shipping Specs.

IHS2a:
Weight: 35lb / 16kg
Dimensions: 14.6"x26.4"x12" / 370x670x305mm

IHS 6a:
Weight: 37lb / 17kg
Dimensions: 14.6"x26.4"x12" / 370x670x305mm

IHS 10a:
Weight: 79lb / 36kg
Dimensions: 14.6"x30.3"x13" / 370x770x330mm

IHS 20a
Weight: 79lb / 36kg
Dimensions: 14.6"x30.3"x13" / 370x770x330mm



Features

- Solid, one-piece construction is lightweight and easy to clean
- Splash-proof housing, keypad and display mean easy cleaning and peace of mind
- Hold function freezes the displayed weight, allowing time to lapse without losing the result
- High-contrast display is easily visible from a distance
- Ergonomic cradle provides comfortable support
- Easy-grip carrying handles for convenient mobility
- Operates with AC adapter or 4 x AA batteries (both included)
- Auto power-off to save energy
- Tape measure included to easily measure the babies progress in both cm and inches
- Weighing units: kg, lb, lb:oz

Applications

- Weighing

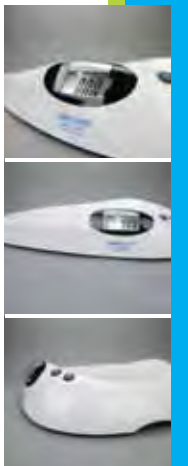


Model	Capacity	Readability	Pan Size	List Price
MXB 20	44lb / 20kg	0.01lb / 0.01kg	11"x21.1" / 280x535mm	\$90.00



Shipping Specs.

Weight:
7lb / 3kg
Dimensions:
14.6"x25.2"x4.5" /
370x640x115mm





Features

- High-contrast display is easily visible from a distance
- Simple operation allows quick startup and use with little or no training
- Ergonomic cradle provides comfortable support
- Lightweight design simplifies transport and portability
- Operates with AC adapter (included) or 4 x AA batteries (not included)
- Auto power-off to save energy
- Memory features can recall the last weight used allowing the user to focus on the baby or toddler
- Cradle can be removed for weighing toddlers on the non-slip rubber mat
- Weighing units: kg, lb, lb:oz

Applications

- Weighing

Model	Capacity	Readability	Pan Size	List Price
MTB20	44lb / 20kg	0.005lb / 5g	11.2"x22" / 285x560mm	\$150.00



Shipping Specs.

Weight:
9lb / 4kg
Dimensions:
7.1"x23.6"x14.6" /
180x600x370mm



Table of Contents

Features

- Anti-slip platform ensures safety stepping on and off the scale
- Integrated wheels permit easy movement
- Height rod facilitates measuring children and adults while weighing
- Weighing units: kg, lb
- BMI - Body Mass Index
- Robust metal housing
- Large red LCD display
- Color coded, sealed keypad
- Hold function
- Full range tare
- DC adapter
- Overload protection
- Rechargeable battery / mains adapter supplied as standard
- RS-232 interface

Applications

- Weighing



MDW 160M

MDW 250L

MDW 300L

Model	Capacity	Readability	Pan Size	List Price
MDW 160M	350lb / 160kg	0.2lb / 0.1kg	14.8"x10.8" / 375x275mm	\$280.00
MDW 250L	550lb / 250kg	0.2lb / 0.1kg	10.8"x14.8" / 275x375mm	\$380.00
MDW 300L	660lb / 300kg	0.1lb / 0.05kg	10.8"x14.8" / 275x375mm	\$485.00



Shipping Specs.

MDW 160M:
Weight: 43lb / 20kg
Dimensions: 60"x21"x7" /
1524x533x178mm

MDW 250L:
Weight: 33lb / 15kg
Dimensions: 20"x37"x7" /
508x940x178mm

MDW 300L:
Weight: 36lb / 16kg
Dimensions: 52"x21"x7" /
1320x533x178mm



Table of Contents

Accessories for MDW 250L / 300L

Item number	Description	List Price
3074010266	RS-232 cable (null-modem)	\$35.00
3074010507	RS-232 to USB adapter (must order corresponding RS-232 cable)	\$50.00
3074010267	USB cable	\$35.00
1120011156	ATP thermal printer	\$335.00
3126011263	Thermal Paper (1 Roll) (for item no. 1120011156-ATP printer)	\$14.00
3126011281	Thermal Paper (10 Rolls) (for item no. 1120011156-ATP printer)	\$90.00
600002028	Adam DU software	\$95.00





Features

- Vivid, backlit LCD easily visible in any lighting conditions
- Color-coded keys facilitate quick recognition of the most frequently used buttons
- Anti-slip platform ensures safety stepping on and off the scale
- Integrated wheels permit easy movement
- RS-232 interface for connection to computers and printers
- BMI (Body Mass Index) indicator
- External calibration allows for verification and adjustment with weights
- Rechargeable battery included for operation virtually anywhere
- AC adapter included
- Automatic height calculation using ultrasonic sensors for precision measurements
- Print out can include a patient and doctor ID as well as BMI measurements
- Weighing units: kg, lb, lb:oz

Applications

- Weighing

Model	Capacity	Readability	Pan Size	List Price
MUW 300L	660lb / 300kg	0.1lb / 0.05kg	14.8"x14.8" / 375x375mm	\$995.00



Features

- Vivid, backlit LCD easily visible in any lighting conditions
- Programmable backlight can be set to "always on", "always off" or "light only when weighing"
- Color-coded keys facilitate quick recognition of the most frequently used buttons
- Rugged construction stands up to industrial use
- Three-point ShockProtect® feature helps prevent overload damage to internal components
- Removable Draft Shield
- Large, type 304 stainless steel pan allows swift cleaning
- Security slot for optional Kensington-type lock and cable to help prevent theft
- External calibration allows for verification and adjustment with weights
- Operates with AC adapter (included) or 6 x AA batteries (not included)
- Auto power-off to save energy
- Weighing units: g, kg/hL, lb/bu

Applications

- Weighing



Model	Capacity	Readability	Pan Size	List Price
CQT 1752GR	1750g	0.05g	4.7" ø / 120mm ø	\$275.00



Item number	Description	List Price
3074010266	RS-232 cable (null-modem)	\$35.00
3074010507	RS-232 to USB adapter (must order corresponding RS-232 cable)	\$50.00
3074010267	USB cable	\$35.00
1120011156	ATP thermal printer	\$335.00
3126011263	Thermal Paper (1 Roll) (for item no. 1120011156-ATP printer)	\$14.00
3126011281	Thermal Paper (10 Rolls) (for item no. 1120011156-ATP printer)	\$90.00
600002028	Adam DU software	\$95.00

Shipping Specs.

Weight:
57lb / 26kg
Dimensions:
30.3"x37.8"x7.1" /
770x960x180mm



Shipping Specs.

Weight:
4lb / 2kg
Dimensions:
14"x11.2"x5.5" /
355x285x140mm



Item number	Description	List Price
308002042	Hard carrying case w/ lock	\$75.00
308232033	In-use wet cover	\$20.00
308232036	In-use wet cover (pack of 5)	\$85.00
308232037	In-use wet cover (pack of 10)	\$150.00
700100046	Kensington type lock and cable	\$28.00
700100190	ASTM 2 - 1000g calibration weight	\$125.00





Features

- Vivid, backlit LCD easily visible in any lighting conditions
- Color-coded keys facilitate quick recognition of the most frequently used buttons
- Splash-proof housing, keypad and display mean easy cleaning and peace of mind
- Level indicator and adjusting feet ensure proper balance setup for optimum weighing results
- Overload protection helps prevent damage to internal components
- RS-232 interface for connection to computers and printers
- Rechargeable battery included for operation virtually anywhere
- AC adapter included
- Programmable auto power-off to save energy
- Weighing units: g, lb, oz, GN, ct, dwt, mm, ozt, T, tL.H, tL.S, tL.T

Applications

- Weighing
- Density determination

Model	Capacity	Readability	Pan Size	List Price
HCBJ 123	120g	0.001g	5.2" ø / 132mm ø	\$1,695.00
HCBJ 302	300g	0.01g	6.3"x6.5" / 160x165mm	\$1,195.00
HCBJ 1002	1000g	0.01g	6.3"x6.5" / 160x165mm	\$1,325.00
HCBJ 2002	2000g	0.01g	6.3"x6.5" / 160x165mm	\$1,595.00



Item number	Description	List Price
308232034	In-use wet cover (pack of 5)	\$85.00
308232035	In-use wet cover (pack of 10)	\$150.00
308232030	In-use wet cover	\$20.00
3074010507	RS-232 to USB adapter (must order corresponding RS-232 cable)	\$50.00
3074010266	RS-232 cable (null-modem)	\$35.00
3074010267	USB cable	\$35.00
3126011263	Thermal Paper (1 Roll) (for item no. 1120011156-ATP printer)	\$14.00
3126011281	Thermal Paper (10 Rolls) (for item no. 1120011156-ATP printer)	\$90.00

Shipping Specs.

Weight:
7lb / 3kg
Dimensions:
14"x11.2"x5.5" /
355x285x140mm



ADAM DU Software

- Monitor and collect data readings for up to 8 balances or scales simultaneously
- Record custom data or notations along with readings using up to 6 user-defined fields
- Collect data and time with readings
- View statistics including Min, Max, Median, Mean, Variance, and Standard Deviation
- Graph readings in real time. Print results and graphs from within the AdamDU application
- Export reading in several file formats (text, CSV, HTML, XML)
- Direct export to Microsoft® Excel or Microsoft® Word

Microsoft Word, Microsoft Excel, and Microsoft are all registered trademark of Microsoft Corporation in the United States and other countries



Part Number	Model	List Price
600002028	ADAM DU	\$95.00

Anti-Vibration Table

- Scratch resistant marble slab
- Two table construction keeps the marble block in the middle and reduces interference
- Large working surface of 15.7" x 17.7" / 400 x 450mm
- Room around the vibration slab for resting samples
- Light weight tubular aluminium frame
- Adjustable leveling feet for uneven surfaces
- Polished finish



Shipping Specs.

Weight:
205lb / 3kg
Dimensions:
21"x46"x48" /
533x1168x1219mm



Part Number	Model	List Price
104008036	Anti-Vibration Table	\$675.00



Available as a download and on a disc.

ATP Printer

- Thermal printer
- Dimensions: 7.2" x 4.5" x 3.5"
- Print size 24 x 24 dot
- Column Size 384 dots per line
- 57.5mm paper width



Part Number	Model	List Price
1120011156	ATP Printer	\$335.00
3123011281	Printer Paper (10 Rolls)	\$90.00
3123011263	ATP Printer Paper (1 Roll)	\$14.00

ASTM Calibration Weights



Part Number	Class	Capacity	List Price
700100186	ASTM 0	100g	\$180.00
700100188	ASTM 1	200g	\$95.00
700100189	ASTM 1	500g	\$125.00
700100191	ASTM 1	2000g	\$315.00
700100187	ASTM 2	100g	\$65.00
700100190	ASTM 2	1000g	\$125.00
700100194	ASTM 3	50g	\$50.00
700100195	ASTM 3	200g	\$65.00
700100193	ASTM 3	5000g	\$325.00
700100192	ASTM 4	2000g	\$125.00

Index by Market

Laboratory	Retail	Food/Catering	Agriculture/Vet
Education	Jewelry	Industrial	Medical/Health

PW Analytical Balances	● ● ●	3	WBZ Washdown Retail Scales	● ●	26
PGW Precision Balances	● ● ●	4-5	WBW Washdown Scales	● ● ● ● ●	27
PGL Precision Balances	● ● ●	6-7	Warrior® Washdown Scales	● ● ● ●	28
PMB Moisture Analyzer	●	8	PT Platforms	●	29
Highland® Portable Precision Balances	● ● ● ● ● ● ●	9	PTM Platforms	● ●	30
Core® Compact Portable Balances	● ● ● ● ● ● ●	10	PTS Pallet Truck Scale	●	31
CB Compact Balances	● ● ● ●	11	GF Platforms	●	32
Dune® Compact Balances	● ● ● ● ●	12	AE Indicators	● ● ●	33
TBB Triple Beam Balances	● ● ● ● ●	13	GC Counting Indicator	●	34
LBK Weighing Scales	● ● ● ●	14	GK Indicator	● ● ●	35
CBK Bench Checkweighing Scales	● ●	15	SHS Crane Scales	●	36
CBC Bench Counting Scales	●	16	LHS Crane Scales	●	37
CBD Bench Counting Scales	●	17	IHS Crane Scales	●	38
GBK Bench Checkweighing Scales	● ● ● ● ●	18	MXB Baby Scale	●	39
GFK Floor Checkweighing Scales	● ● ● ● ●	19	MTB Baby and Toddler Scale	●	40
ABK Bench Weighing Scales	● ● ● ●	20	MDW Physician Scales	●	41
AFK Floor Weighing Scales	● ● ● ●	21	MUW Medical Scales	●	42
GBC Bench Counting Scales	●	22	CQT Grain Scale	●	43
GFC Floor Counting Scales	●	23	Highland® Density / Precious Metal Balances	●	44
CPWplus Weighing Scales	● ● ● ● ● ●	24-25	Key Accessories		45-46

To place an order

To email sales:
sales@adamequipment.com

To place an order via phone
 1 888-355-3868

To place an order via email:
orders@adamequipment.com

To place an order via fax
 1-203-792-3406



Looking for someone specific?



Find the desired departments extension quick and easily from the list below.

Dial the number **1(203)790-4774** then the corresponding extension after.

Sales:	800
Tech Support:	801
Customer Service:	803
Spanish Sales:	810
Spanish Tech Support:	811

Adam Equipment Inc.

26 Commerce Drive, Danbury, CT 06810

Tel: 203-790-4774 - Fax: 203-792-3406 - Email: sales@adamequipment.com

www.adamequipment.com

Dune, Highland, Core Balance, Warrior, ShockProtect, HandiCal, Adam Equipment and the Adam Equipment Logo are all registered trademarks of Adam Equipment and as such use of these trademarks in any way is only granted with the expressed written permission of Adam Equipment.

Adam Equipment follows a policy of continuous improvement and reserves the right to change specifications and pricing without notice.

Adam Equipment Standard terms and condition of sales apply. Information is correct until time of printing.